

TBA 19 200ML SLIM 30v FILLING LINE AND TBA 8 1000ML SQUARE FILLING LINE AND GEA UHT PLANT 65000 LPH FOR SALE

SKU	Usm-253
Status	Just In
Condition	Refurbished

Machine has the following cherectristics

Tba 8 filling machine + cap applicator + packer + conveyors and paper trolley + uht plant and homogeniser 6500 LPh + aseptic tank 20000 L and Cip

OPTION A - GEA UHT PROCESSING LINE 6,500 LPH

Refurbished GEA UHT Plant (2012) - 6,500 LPH, suitable for Milk, Cream and Juice, max temperature 145°C.

Aseptic Homogenizer - 6,500 LPH.

GEA Aseptic Tank - 20,000 Liters with Valve Cluster and Control System (2012).

Brand New Trepak CIP System.

OPTION B - TETRA PAK 1,000ML SQUARE ASEPTIC FILLING LINE

Tetra Brik Aseptic TBA/8 1000 Square Filling Machine (2001) - 5,500 cartons/hour.

TCAP-88 Cap Applicator (2000) - up to 6,000 caps/hour.

TCP-70 Cardboard Packer (1999) - up to 7,000 cartons/hour.

Accessories Included: 20 Meter Conveyors, Paper Trolley, Manuals & Documentation.

Option C: Refurbished TBA 19 200ml Slim 30V Filling Line for Sale

We are offering a refurbished **TBA 19 200ml Slim 30V Aseptic Filling Line** in ready condition.

Line Includes:

1. TBA 19 200ml Slim Filling Machine

- Year of Manufacturing: 2007

- Version: 30V

- Working Hours: 30,000

2. TSA 21 Straw Applicator

3. Multi Shrink Wrapper 65

4. 20 Meter Conveyors & Paper Trolley

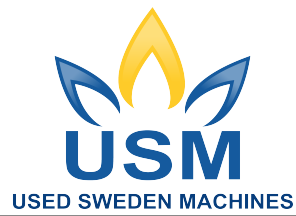
5.

Delivery Time:

60 days after advance payment

Used Sweden Machines

Mob: +92 (321) 7415373
Landline: +92(55)3845988



Website: www.usedswedenmachines.com
Email: info@usm.com.pk

Payment Terms:

100% before shipment

Ways of Payments

TT

Second hand machine with not guarantee

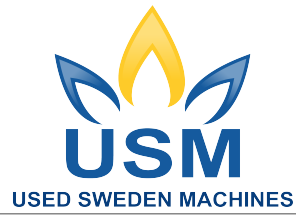
Machine Subject Prior to Sale

Machine Images

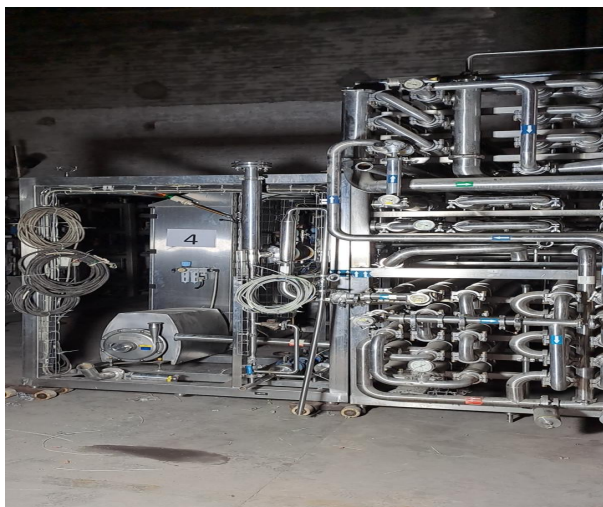


Used Sweden Machines

Mob: +92 (321) 7415373
Landline: +92(55)3845988

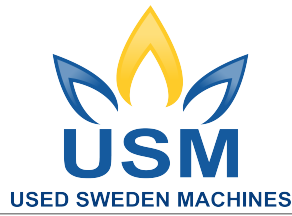


Website: www.usedswedenmachines.com
Email: info@usm.com.pk



Used Sweden Machines

Mob: +92 (321) 7415373
Landline: +92(55)3845988



Website: www.usedswedenmachines.com
Email: info@usm.com.pk

